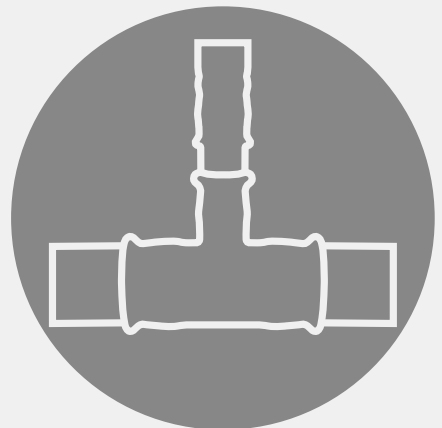


EVERYTHING **SUPPLY**

**KNOW
HOW
INSTALLED**



LIFELINES FOR MODERN BUILDINGS

A MODERN BUILDING WORKS LIKE A COMPLEX ORGANISM THAT MUST BE SUPPLIED WITH WATER, HEAT, ENERGY AND AIR.

At Geberit, we deliver solutions that allow its functions to work reliably and consistently; from potable water, heating, cooling and gas to compressed air and other media. Geberit supply systems for residential buildings, industry and public buildings provide the confidence your customers expect from you, and with 150 years of Know-How and innovation behind them, you can be sure they won't let you down.

Geberit is the market leader in sanitary technology in Europe. The success of a product or technology goes hand in hand with its practicality at the building site and its economic efficiency. For this reason, the feedback and suggestions provided by sanitary engineers from across the globe are taken into account for all new innovations and further developments. This means that Geberit products and systems incorporate your Know-How.



CONTENTS

Innovation timeline	04	Geberit Pressing Jaws and Collars	24
Why Choose Geberit?	06	Application technical data	26
Geberit Supply Systems	08	Pressing Jaws and Pressing Tool technical data	28
Geberit Mapress	10	Geberit BIM	30
Geberit Mapress Copper	12	Training	32
Geberit Mapress Stainless Steel	14	Visit our showroom	34
Geberit Mapress Carbon Steel and CuNiFe	16	Know-How installed	36
Six stages of pressing	17	Geberit Pro App	38
Geberit Mepla	18	Case Studies	40
Geberit Pressing Tools	22		

**KNOW
HOW
INSTALLED**

OVER 150 YEARS OF INNOVATION

1849

Thomas Twyford founded the sanitaryware company.



1874

Caspar Melchior Geberit started a plumbing business in Rapperswil, Switzerland.



1883

Thomas William Twyford invents the Unitas, the first all ceramic free standing pedestal closet.



1921

The first patent for the "Phoenix" wooden cistern is registered.



1960

Geberit HDPE drainage system first developed.



1964

Geberit launch their first concealed cistern.

1970

Both electrofusion coupling and Geberit Sovent released.



1977

Launch of Geberit installation systems and shower toilets in Europe.



1978

Geberit Pluvia siphonic roof drainage released.



1990

Geberit Mepla, Geberit's first multilayer piping system, is launched.



1997

Geberit Silent-DB20, the worlds first welded acoustic drainage system is launched.



2004

Geberit acquires Mapress Holding GmbH in Langenfeld (DE).



2007

Twyford introduce Flushwise® and Rimfree®.



2009

Geberit Silent-PP acoustic pushfit system launched.

2014

New Geberit Sovent 110 developed allowing 12l/s in the stack.



2015

Geberit acquires Sanitec and the Twyford brand.



2016

Geberit ranked in the top 100 most innovative companies by Forbes.



2019

Geberit SuperTube launched.



WHY CHOOSE GEBERIT SUPPLY SYSTEMS FOR YOUR PROJECT?



Geberit Mapress, available in a range of materials, is a press-fit solution for every application.

Geberit Mepla multi-layer piping is a flexible and economical system that combines the advantages of metal and plastic.



Compact and lightweight, Geberit tooling is convenient and easy to use, making installation of Geberit supply systems a quick and simple process.



Partnership and reliability are core values that our customers around the world can expect from us. Whether you are looking for sound initial advice, planning support, help with invitations to tender, or building site support, the Geberit team is always by your side when you need it.

OUR COMMITMENT TO YOU. GEBERIT VALUES.



KNOW-HOW

We use our experience and technical expertise to create solutions that make a real and lasting difference, delivering advanced training through our worldwide academies.



INNOVATION

Every new development is based on solid research and the latest innovations. The quality of our R & D ensures that we stay ahead in sanitary technology.



PARTNERSHIP

Our customers are the focus of everything we do. We build better relationships by working together to discover more effective solutions.



RELIABILITY

We aim to create durable solutions by simplifying the complex and ensuring the safety and dependability of our products and systems throughout their lifecycles.



QUALITY OF LIFE

Our intuitive products enhance modern living, by setting new standards in design and functionality. Our focus on water economy is part of our long-term contribution to the environment and society.

GEBERIT SUPPLY SYSTEMS

PRODUCTS	 DRINKING WATER	 HEATING	 GAS	 SPRINKLER	 INDUSTRY AND SHIP BUILDING
 → Geberit Mappress Stainless Steel	×	×	×	×	×
 → Geberit Mappress Copper	×	×	×		×
 → Geberit Mappress Carbon Steel		×			×
 → Geberit Mappress CuNiFE					×
 → Geberit Mepla	×	×			×

SPEED. PERFORMANCE. EASY INSTALLATION RESULT.

A QUICKER INSTALLATION WITH IMPROVED SAFETY AND HYGIENE.

With a wide range of materials and seal rings, Geberit Mapress is the press-fit piping system for all applications. Quick, cost efficient and safer than traditional methods as no open flame is required, Mapress is available in copper, stainless steel, carbon steel and CuNiFe.

- No hot works and no cooling down period
- Unpressed joints leak during pressure test and can be completed without draining the system
- Coloured pressing indicators help identify the material and pressed fittings
- Protection end caps stop debris and dirt getting into the system leading to a cleaner installation process



CIIR, BLACK

General applications in technical building systems and industry.



HNBR, YELLOW

The specialist for gas applications.



FKM, BLUE

High temperature and chemical resistance.



FKM, WHITE

The expert for saturated steam applications.

PROVEN PERFORMANCE UNDER PRESSURE



WATER

Drinking water is our most valuable resource and installers are responsible for ensuring that good quality water is available where it's needed. Geberit Mapress Copper and Stainless Steel ensure safe potable water with a fast, reliable, standard-compliant installation.



GAS

Gas applications require a safe connection for such volatile media, and pipework must comply with specific requirements for gas. Geberit Mapress Copper Gas and Stainless Steel Gas have all the necessary approvals for natural and liquified gas ensuring a safe, certified installation.



AIR

Compressed air applications require an airtight seal which can operate at a suitable pressure for the situation. Geberit Mapress Stainless Steel and Copper are for use on all compressed air installations and Geberit Mapress Carbon Steel for use with dry compressed air requirements; all providing a reliable seal with fast, safe installation.



HEATING

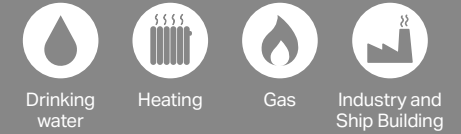
Heating applications require a reliable supply of heat and must rely on the transport of hot water from the boiler to radiators and panel heaters with maximum heat resistance and the lowest possible flow resistance. Geberit Mapress Copper, Stainless Steel and Carbon Steel provide a solution with high safety characteristics and optimised hydraulics.



COOLING

Chilled water and cooling applications require a safe solution for carrying water, gases and other cooling media to air handling units and air conditioning units or chillers. Geberit Mapress Copper, Stainless Steel and Carbon Steel are suitable materials for such applications.

GEBERIT MAPRESS COPPER



TRADITIONAL MATERIAL. MODERN INSTALLATION.

GEBERIT MAPRESS COPPER FITTINGS ARE ROBUST, CONVENIENT AND HYGIENIC TO USE WITHOUT THE NEED FOR HOT WORKS.

- Pressed quickly without an open flame
- Robust connection through cold deformation of pipe and fitting
- Clear and easy detection of unpressed connections
- High pressure and temperature resistance



VERSATILE APPLICATIONS

Geberit Mapress Copper is the ideal material to use in drinking water installations, heating and cooling water systems, as well as gas and compressed air pipes. Geberit Mapress Copper is also suitable for special applications with increased requirements.

SAFE PROCESSING WITHOUT AN OPEN FLAME

Geberit Mapress Copper follows the same pressing principles as all other Geberit Mapress materials. This pressing process requires no hot works, meaning no open flame and therefore no complex fire protection requirements.

FAST CONNECTION

The pressing procedure is straightforward and quick. In fact, it's around twice as fast as soldering. This is because the connection requires virtually no preparatory work and the pressing procedure itself is faster. Cut to length, debur, mark-up, attach fitting and press. The strength and tightness of the press connection is achieved by cold deformation of the pipe and fitting. The pressing indicator and defined leakage paths also ensure the highest level of safety when pressing and in operation. Leaks are reliably detected during the visual check and the subsequent pressure test.

COMPREHENSIVE RANGE OF COPPER WITH THE BEST CONNECTIONS

Geberit Mapress Copper fittings are made of high-quality copper and are identified with white pressing indicators. Mapress Copper is approved for temperatures of up to 120°C (180°C for solar applications) and pressures of up to 1.6MPa (16 bar). The fitting range covers all conventional dimensions from 12mm to 108mm. We recommend the use of copper pipes in compliance with EN 1057 for processing with Mapress copper fittings. Fittings can be used with soft (R220), half-hard (R250) and hard (R290) copper pipes (wall thickness dependent).

A wide range of adaptors, which can also be pressed, establish connection options to other materials.

Geberit Mapress copper transition with MasterFix adaptor establishes the connection to Geberit cisterns and elements for washbasins. It can be quickly and easily screwed without tools.



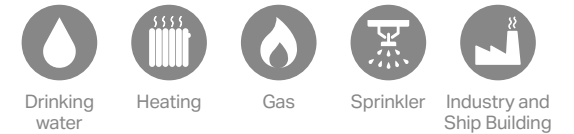
← Geberit Mapress Copper gas fittings can be used for gas installations, and have all the necessary approvals for natural gases, liquefied gases and several technical gases, ensuring a safe and certified installation.

GEBERIT MAPRESS STAINLESS STEEL

A VERSATILE SOLUTION FOR THE MOST TECHNICAL OF REQUIREMENTS

GEBERIT MAPRESS STAINLESS STEEL IS THE VERSATILE INSTALLATION SYSTEM WHICH MEETS HIGH TECHNICAL REQUIREMENTS. THE PRODUCT MATERIAL DEMONSTRATES ITS PERFORMANCE CAPABILITY IN THE DRINKING WATER SUPPLY, IN COMPLEX INDUSTRIAL APPLICATIONS AND IN INSTALLATIONS WITH EXTREMELY HIGH HYGIENIC REQUIREMENTS, SUCH AS THOSE IN HOSPITALS OR LABORATORIES.

- For extremely high requirements in terms of hygiene and load bearing capacity
- Excellent hygiene characteristics
- Resistant to corrosion
- Suitable for different – even aggressive - media



HIGH MOLYBDENUM CONTENT

The Geberit Mapress Stainless Steel 1.4401 system has a minimum molybdenum content of 2.3%. This value is higher than the usual standards and therefore ensures an extremely high corrosion resistance as well as excellent hygiene characteristics.

VERSATILE AND RELIABLE

If you are faced with the challenge of overcoming demanding hygiene requirements, high temperatures and pressures or aggressive liquids, then Geberit Mapress Stainless Steel is the right choice for you. It is suitable for drinking water installations in living areas, in areas particularly sensitive to hygiene, and for industrial buildings and applications.

HYGIENIC ALL THE TIME

Geberit Mapress Stainless Steel is suitable for thermal and chemical disinfection if this is prescribed by directives and regulations or if the supply network is already contaminated. The pressing sockets on the pipes and fittings are delivered with a leakproof plug already fitted. It offers reliable protection against dust and dirt until installation.

APPROVED FOR SPRINKLER SYSTEMS

Geberit Mapress Stainless Steel can be used for 'wet', 'wet/dry' and 'dry' sprinkler systems. The system has received VdS, FM, and LPCB approval.

A COMPREHENSIVE SYSTEM

With around 500 fittings and adaptors, Geberit Mapress Stainless Steel offers a comprehensive range of application options. Geberit Mapress Stainless Steel fittings are identified by the blue indicator ring.

As system pipes, CrNiMo steel 1.4401 is provided for diverse applications and CrMoTi steel 1.4521 is offered as an economical alternative for drinking water installations.

The wide range of adaptors and transitions to other Geberit piping systems optimises the economical use of product materials. The Geberit MasterFix adaptor ensures a quick, tool-free and reliable screw connection to the Geberit sanitary elements.



← Geberit Mapress Stainless Steel gas fittings can be used for gas installations, and have all the necessary approvals for natural gases, liquefied gases and several technical gases, ensuring a safe and certified installation.



GEBERIT MAPRESS CARBON STEEL AND CUNIFE

CARBON STEEL

Geberit Mapress Carbon Steel, identified by its red pressing indicator, is the economical solution for closed circuit installations. Made of Carbon Steel (E195 1.0034), it can be used for compressed air systems, heating systems and solar systems.

Geberit Mapress Carbon Steel pipes are available with an outside zinc-plating (12-108mm) or with a cream-white plastic coating (12-54mm). For compressed air installations, Mapress Carbon Steel pipes are also available in non-alloy steel 1.0215, inside and outside zinc-plated (15-108mm). Over 400 fittings are available for a diverse range of application solutions. Suitable adaptors ensure quick, easy and reliable connections to other Geberit products for economical connection to terminations.



CUNIFE

Geberit Mapress CuNiFe, identified by its black pressing indicator, is made from a cupro-nickel alloy. It is particularly suitable for applications involving salt water, including saturated solutions (25%) thanks to its high level of corrosion resistance. Geberit Mapress CuNiFe is certified for civil and military shipbuilding and on drilling platforms for service, pool and heating water, for saltwater cooling systems and salt water-operated sprinkler systems. Special thermal and mechanical treatment of the pipes creates a homogeneous, high-quality material structure.



GEBERIT MAPRESS SIX STAGES OF PRESSING

CUT AND DEBURR PIPE



Cut the pipe to length and deburr inside and out so as not to damage the seal ring. Clean swarf from the pipe end.

MARK INSERTION DEPTH



Use insertion depth marker to mark depth appropriately.

PREPARE THE FITTING



Remove the protection plug and visually check the seal ring.

INSERT PIPE INTO FITTING



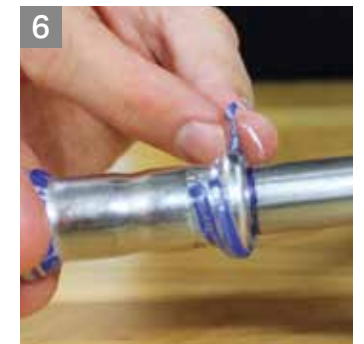
Ensure the insertion depth mark from stage 2 is met before pressing.

PRESS



Must use correctly sized jaw/collar. Ensure correct alignment.

REMOVE PRESSING INDICATOR



Press complete!

GEBERIT MEPLA

FLEXIBLE AND INHERENTLY STABLE WITH NO HOT WORKS

- Combines the advantages of metal and plastic
- Can be manipulated to fit shallow or tight bends
- Clean, safe and easy to process
- Reliable press connection
- Easily adaptable to use with other systems such as Geberit Mapress
- 97% recyclable when separated into aluminium and plastic



Drinking water



Heating



Industry and Ship Building

The Geberit Mepla multilayer pipe system combines the advantages of metal and plastic.

This easy, reliable processing and a comprehensive range of pipe dimensions and fittings make Geberit Mepla a flexible, economical piping system. Geberit Mepla complies with all the necessary standards and regulations making it suitable for all relevant industrial and commercial applications.

Geberit Mepla is more corrosion-resistant and lighter than metal pipes and is more inherently stable and durable than plastic pipes. It can therefore be bent and processed easily and safely.



Pipes and fittings for a wide range of applications.



Mepla system pipes up to 20mm can be bent by hand without difficulty.

THREE LAYERS FOR DRINKING WATER AND HEATING

More corrosion-resistant and lighter than metal pipes, more inherently stable and robust than plastic pipes – easy and safe to process, Geberit Mepla combines the advantages of both types of pipe. With a barrier against oxygen diffusion, Geberit Mepla also remains leakproof when subjected to pressure far in excess of the maximum standard testing pressure of 1.1 MPa (11 bar). The outer plastic layer made of polyethylene (PE-RT of the second generation) protects against corrosion and mechanical damage. The central aluminium layer makes the pipe stable and flexible. The inner layer, which is likewise made of PE-RT, is corrosion resistant and hygienic. Geberit Mepla can therefore be used for all drinking water qualities.



SAFE AND EASY TO PROCESS

DESIGNED TO LEAK IF UNPRESSED

Unpressed Geberit Mepla fittings leak visibly when subjected to leak tests with water. Water flows out of the unpressed connections. This occurs even at low water testing pressure. The pressure test cannot be completed successfully unless all the connections have been pressed.

VERSATILE AND ECONOMICAL IN INDUSTRY

The Geberit Mepla pressing system is used in the automotive, chemical, pharmaceutical and food and beverage industries for compressed air systems, vacuum systems, cooling systems, process and potable water pipes as well as heating. It has high hygiene standards and is permanently leakproof in operation.

THREE LAYERS FOR RELIABLE APPLICATION

Geberit Mepla system pipes combine the quality advantages of both plastic and metal. The stabilising core of an aluminium pipe is surrounded on the outside by a protective coating of PE-RT. The inner and outer layers of PE-RT are corrosion-resistant.

SAFETY FOR HIGH LOADS

The tremendous tensile strength of the Geberit Mepla press connection ensures a reliable, long-lasting connection. The quality of the press connection is monitored during manufacturing and exceeds the values demanded in the standards many times over. This guarantees a high standard of reliability, even in piping systems subjected to high loads.

HIGH SUSTAINABILITY

The relatively thick aluminium layer in Geberit Mepla multilayer pipes ensures a high level of sustainability and extraordinary mechanical strength.

SMOOTH SURFACES FOR MINIMUM ADHESION

The inner plastic layer of Geberit Mepla pipes has a surface roughness of only $0.7\mu\text{m}$ so it is more difficult for limescale and biofilm to adhere to the smooth surface.

EXCEPTIONALLY HYGIENIC

Geberit Mepla fittings and pipes have protective caps which facilitate hygienic safety when stored or during an installation break.

CHILLED WATER PIPES

Chilled water pipes can be installed using Geberit Mepla without too much effort, as special processing is not required for corrosion protection.

A BARRIER TO PROTECT AGAINST DIFFUSION

Oxygen cannot diffuse through the aluminium layer meaning that Geberit Mepla is an ideal solution for closed heating applications.

LARGE DIAMETER

Geberit Mepla is available up to a dimension of d75 and can therefore be used in a broad range of applications, including larger construction projects.

FLEXIBLE ADJUSTMENT

Installation can be adjusted flexibly to the conditions on site. Pipes at d16 and d20 can be bent effortlessly by hand. Sizes up to d50 can be bent using appropriate tooling. Fewer fittings can be used, saving time and money.



↑ Unpressed Geberit Mepla fittings leak visibly when subjected to leak tests with water.



↑ Pipes can be bent by hand or by tool.



GEBERIT PRESSING TOOLS

LIGHTWEIGHT, FAST AND CONVENIENT

CONVENIENT PROCESSING

Geberit pressing tools are compact, lightweight and provide a high level of convenience. Easy handling and low weight are particularly suited for performing overhead work.

CHARGE RECHARGEABLE BATTERIES LESS OFTEN

Geberit pressing tools are electrohydraulic. The battery-operated pressing tools are fitted with modern lithium-ion batteries. Thanks to the long battery running time, Geberit pressing tools require charging less often and, due to short charging times, they can be put back into operation more quickly. In addition, two rechargeable batteries are always included in the tool's case. This means it is possible to work with one rechargeable battery while the second is being charged.

All pressing tools come with a bluetooth interface for the NovoCheck app.

App features include:

- Downloadable log book to view completed presses
- Current status of the tool
- Notification of when calibration is due



- Compact and lightweight with high performance
- Also suitable for restricted construction situations
- Slim, non-slip handle for reliable handling
- Electrohydraulic drive
- Good visibility in dark corners thanks to integrated LEDs
- Easy maintenance thanks to brushless motors



ACCESSORIES ALSO AVAILABLE



GEBERIT PRESSING JAWS AND PRESSING COLLARS

GEBERIT PRESSING JAWS

NO MAINTENANCE THROUGHOUT THE ENTIRE SERVICE LIFE

High pressing performance without external maintenance. The maintenance-free Geberit pressing jaws ensure a balanced distribution of force which lasts throughout the entire service life. Even after prolonged and intensive use, the corrosion resistant surfaces keep the tool in top quality.

PRESSING OPERATION WITH MAXIMUM PRECISION

Incorrect pressing is practically a thing of the past thanks to the precise pressing jaw guide of the fitting. Set in the correct position, the pressing jaw grips reliably and cannot slide out of place. This guarantees reliable connections.

GEBERIT POWERTEST

The Geberit PowerTest provides you with information about the condition of your Geberit pressing jaw. Hold the Geberit PowerTest at the front between the pressing jaw and press a fitting. If the Geberit PowerTest changes colour, the pressing jaw can continue to be used.



GEBERIT PRESSING COLLARS WITH SNAP MECHANISM AND THE MAINTENANCE-FREE GEBERIT PRESSING JAWS ENSURE QUICK PROCESSING AND A RELIABLE CONNECTION WHEN INSTALLING SUPPLY SYSTEMS.



↑
Easy handling on-site.



↑
Also for easy overhead installation.



↑
Special adaptor jaw for pressing large Mapress pipe diameters.

GEBERIT PRESSING COLLARS.

FOR LARGE DIMENSIONS

At larger dimensions, collars are used for pressing rather than jaws. Regardless of how the pipes are aligned, these are held firmly onto the press fitting by a snap mechanism, thereby ensuring easy and reliable handling.

Geberit pressing collars and Geberit adaptors require regular maintenance and service.




COMPACT DESIGN

With the small, compact but extremely robust design, processing is convenient even in narrow spaces.

RELIABLE APPLICATION

The geometry of the collars allows for easy positioning of the adaptors for a simple connection.

PRESSING JAWS AND PRESSING TOOL TECHNICAL DATA

	Geberit ACO 103plus	Geberit ACO 203plus	Geberit ACO 203XLplus
			
Compatibility	1	2	2XL
Characteristics			
LED pressing point light	✓	✓	✓
Bluetooth®	✓	✓	✓
Brushless motor		✓	✓
Power supply	Rechargeable battery	Rechargeable battery	Rechargeable battery
Technical data			
Nominal force (kN)	19	32	32
Protection degree	IP20	IP20	IP20
Cable length (m)	-	-	-
Power consumption (W)	240	450	450
Operating temperature	-20 – +60 °C	-20 – +60 °C	-20 – +60 °C
Sound pressure level at user's ear	75.5 db(A)	76.5 db(A)	76.5 db(A)
Vibration emission value (m/s²)	≤ 2.5	≤ 2.5	≤ 2.5
Weight (kg)	1.7	2.8	3.8

THE PRESSING TOOLS FOR GEBERIT MEPLA

	d16	d20	d26	d32	d40	d50	d63	d75	
Geberit Mepla hand-operated pressing pliers	✓	✓	✓						
Compatibility [1] Geberit pressing tool ACO 103plus	✓	✓	✓	✓	✓				Geberit Mepla pressing jaw [1]
Compatibility [2] Geberit hand-operated pressing tool MFP 2 Geberit pressing tool ACO 203plus	✓	✓	✓	✓	✓	✓			Geberit Mepla pressing jaw [2]
Geberit pressing tool ACO 203XLplus							✓	✓	Geberit Mepla pressing collar [2] Geberit adapter jaw ZB203 [2]

THE PRESSING TOOLS FOR GEBERIT MAPRESS

	d12	d15	d18	d22	d28	d35	d42	d54	d66.7	d76.1	d88.9	d108	
Compatibility [1] Geberit pressing tool ACO 103plus	✓	✓	✓	✓	✓	✓							Geberit Mapress pressing jaw [1]
Compatibility [2] Geberit pressing tool ACO 203plus	✓	✓	✓	✓	✓	✓							Geberit Mapress pressing jaw [2]
Compatibility [2XL] Geberit pressing tool ACO 203XLplus Geberit hand-operated pressing tool MFP 2						✓	✓	✓	✓*				Geberit Mapress pressing collar [2] [3] Geberit adapter jaw ZB203 [2]
Compatibility [2XL] Geberit pressing tool ACO 203XLplus										✓	✓	✓/✓/✓	Geberit Mapress pressing collar [2XL/3] Geberit adapter jaw ZB 221 [2XL] / ZB 222 [2XL]

*Excluding MFP 2.

GEBERIT BIM

INTELLIGENT DATA FOR DIGITAL PLANNING

Simplified planning processes for technical building systems and virtual collision checks – with Geberit BIM, everything is now theoretically possible. In practice, however, it frequently falls down due to a lack of suitable, reliable data models and geometries that are easy to handle. But with Geberit, dealing with BIM data is both easy and practical thanks to the complete array of Geberit tools available for planning software. All of these products are prepared in accordance with country-specific and market-specific requirements, meaning sanitary engineers can automatically call upon the appropriate range in the relevant language for their respective countries at any time.

UNIVERSAL DATA MODELS

The focus here is on reduced, practical BIM objects that are easy to handle as part of the day-to-day planning process. This is why Geberit relies on highly simplified, basic geometries with comprehensive meta information that are classified according to the international "IFC" standard. A special feature of the Geberit BIM objects is the "generic visualisation" function. This function makes it possible to display Geberit BIM objects in a manufacturer-neutral format in public sector tenders, thereby eliminating the need for extensive conversions within the overall model. Geberit BIM plug-in is available for Autodesk Revit®, providing rapid access to all Geberit products. This makes time-consuming searches and downloads a thing of the past.

STANDARD COMMITTEES

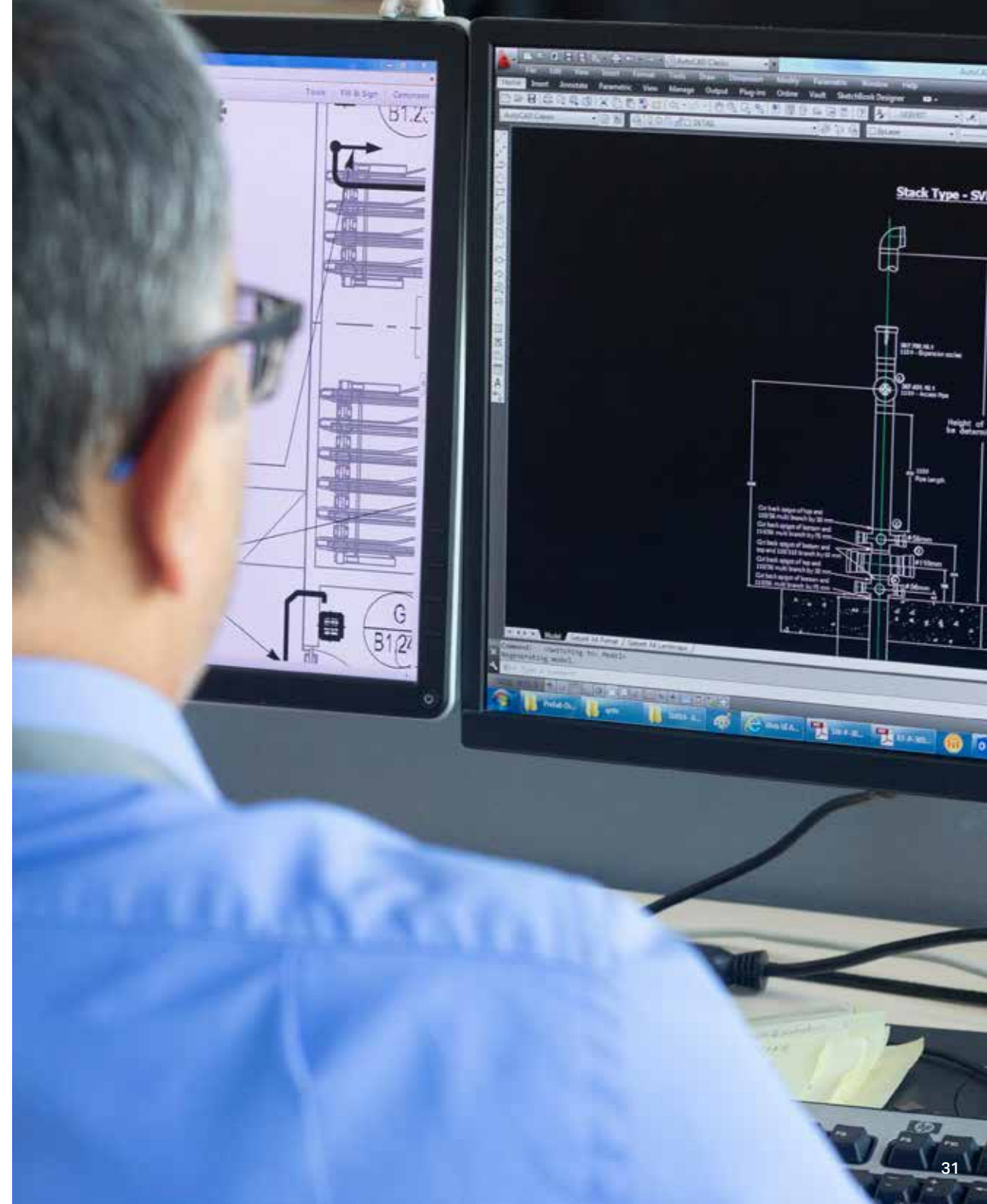
Geberit is committed to efficient and reliable planning processes for technical building systems with BIM and actively contributes in a variety of ways to a whole host of standards committees:

- BuildingSMART
- BTGA AK BIM
- Bundesverband Bausysteme – Fachverband Bauprodukte digital (products for BIM)

GEBERIT BIM NOW AT A GLANCE

- The complete, planning-related Geberit range under a consistent data standard
- Reduced, practical data models with all meta information as required
- Country-specific and market-specific versions in 28 languages
- Manufacturer-neutral visualisation possible
- Geberit BIM plug-in for Autodesk Revit®

→ www.geberit.co.uk/BIM



DEDICATED SUPPORT

DEDICATED TEAM

From planning to logistics to stock availability and aftersales, we're exceeding expectations to offer you a wide range of products to suit any development. At Geberit, we have a dedicated team in place to support your project from start to finish.

TRAINING

Geberit provide installer training at purpose built training academies in Warwick and Dublin - providing the Know-How for installers to feel confident in installing Geberit products. Geberit's supply and drainage modules include training on its press supply systems, HDPE drainage as well as Silent-PP; a range of sound-optimised push-fit drainage pipes and fittings for commercial and domestic installations. Training is free, and lunch and refreshments* are provided. Online training is also available if required.

→ Visit www.geberit.co.uk/training

*In line with current health and safety regulations.



VISIT OUR SHOWROOM

Our state-of-the-art Warwick showroom demonstrates our ability to provide innovative behind-the-wall solutions, whatever the project or application. With all our supply and drainage products on display, as well as frames and cisterns, you can see everything Geberit has to offer.

Realistic room sets from Geberit and Twyford include ceramics, furniture, shower enclosures and flush plates, so you can visualise the complete designed room. You can also experience fully working AquaCleans. If you can't visit us, our Virtual Showroom is available via our website.



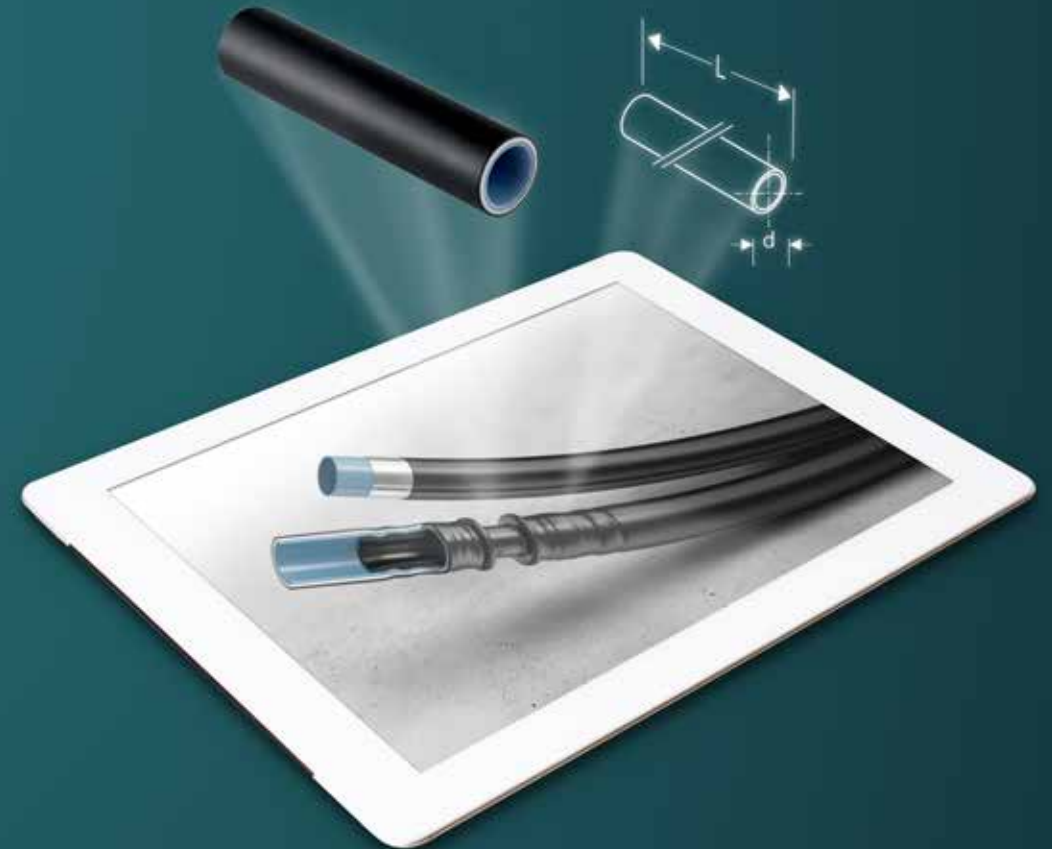
TAKE A TOUR OF OUR VIRTUAL SHOWROOM

A FULLY-IMMERSIVE 3D EXPERIENCE

Our virtual showroom has been designed to allow you the freedom to view the latest Geberit products, anytime and anywhere. The fully-immersive 3D technology provides you with all the tools you need to feel inspired in the comfort of your own environment.

We have included all of our piping and sanitary product solutions within our virtual showroom so you can be sure to see our supply and drainage systems, as well as our latest bathroom collections, AquaClean toilets, frames and flush plates.

→ Visit www.geberit.co.uk/virtualshowroom



KNOW-HOW INSTALLED

INNOVATIVE SYSTEM TECHNOLOGY FOR PROFESSIONAL SANITARY INSTALLATIONS.

Using Geberit systems means playing it safe: there are no uncertainties resulting from combining components from different manufacturers and no unnecessary material costs or installation workload. Geberit systems also provide a very high level of safety and efficiency, and minimise environmental pollution.

Geberit are masters of our art when it comes to developing practical products.

This doesn't happen by accident. For one thing, we apply all of our knowledge and experience to each new innovation and further development. For another, our engineers and product designers can always be found visiting building sites and speaking to plumbers or sanitary engineers. This is how we decide whether or not an idea is viable. This means the Know-How of our market partners is incorporated into all our products. "Know-How Installed" – we can all be proud of that.

**KNOW
HOW
INSTALLED**



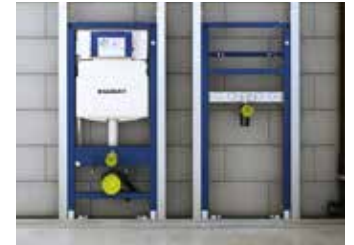
GEBERIT CISTERNS & MECHANISMS

Exposed and concealed cisterns, clever flush control solutions for urinals and watersaving conversion sets for older cisterns – all of the flush control technologies offer the perfection you have come to expect from Geberit, down to the finest detail. In combination with the Geberit Monolith sanitary modules, the various attractive Geberit flush plates and Geberit urinal flush controls, exceptional flush solutions can be created for toilets and urinals which are a perfect fit for the modern bathroom.



GEBERIT INSTALLATION SYSTEMS

Support systems and installation elements combine into bathroom walls up to a ready-to-tile surface. No matter if it's a solid wall or drywall, prewall or inwall installation: with Geberit Duofix, you will find the perfect solution for any sanitary application. At the same time, you can be sure you are using efficient, economical and sustainable system technology when fitting and modernising the bathroom.



GEBERIT SUPPLY SYSTEMS

The Geberit Mapress and Geberit Mepla pressing systems together with an optimally coordinated assortment of product materials, dimensions and fittings allow for the quick, easy, reliable and economic installation of domestic and industrial supply systems. Naturally, the necessary pressing tools are part of the system. The robust Geberit pressing systems ensure quick and flexible connection.



GEBERIT DRAINAGE SYSTEMS

The sound-absorbing Geberit Silent-PP drainage system for building drainage, the Geberit HDPE system for buried drainage pipes and for use in industry and the laboratory, and Geberit Pluvia syphonic roof drainage can be combined to form complete solutions for drainage. Geberit waste fittings ensure hydraulically optimised and stylish connection to sanitary objects.



GEBERIT TAPS AND FLUSHING SYSTEMS FOR PUBLIC FACILITIES

Only really reliable sanitary product solutions can meet the high requirements of public and semi-public sanitary facilities. Electronic and mechanical urinal and toilet flush controls and quick-response washbasin taps ensure hygienic and economical operation.



GEBERIT PRO APP

GEBERIT KNOW-HOW AT YOUR FINGERTIPS

EVERYTHING THAT GEBERIT OFFERS IS NOW AVAILABLE TO INDUSTRY PROFESSIONALS ON THEIR MOBILE DEVICES. WITH THE GEBERIT PRO APP, YOU CAN BROWSE THE ENTIRE GEBERIT PRODUCT CATALOGUE EASILY. PLUS USE THE BUILT-IN BARCODE SCANNER TO INSTANTLY IDENTIFY ANY GEBERIT PRODUCT.

ALL APP FUNCTIONS AT A GLANCE

PRODUCT IDENTIFIER

Recognises all concealed cisterns since 1964.

With the product identifier, you can find out in an instant which older concealed cistern is located behind the wall. The app recognises all Geberit concealed cisterns from 1964 to today as well as the Geberit urinal systems since 1983. Once identified, all spare parts or conversion sets for the concealed cistern can be called up directly in Geberit Pro.

BARCODE AND QR CODE SCANNER

Locate product information quickly. The scanner for QR codes and barcodes links directly to further product information such as installation manuals, spare parts overviews and other product descriptions.

PRODUCT CATALOGUE

Always there and available to access at any time. Browse the entire catalogue quickly and easily, and find all the product information, and installation manuals you need straight away.

SPARE PARTS

Find the right spare part quickly. The entire spare parts catalogue is available to you at any time. You can quickly find the matching spare parts and order them with the according spare parts number.

BOOKMARKS

Add your own bookmarks. You can now retrieve frequently used content such as products, documents or videos quickly and easily by adding your own bookmarks.

DOWNLOAD NOW FROM THE APP STORE OR GOOGLE PLAY



APPROVALS, MEMBERSHIPS AND AFFILIATIONS



*Geberit Mapress copper and Geberit Mapress stainless steel, and gas variants.

**Geberit Mepla, Geberit Mapress copper and Geberit Mapress stainless steel only.



PROVEN PERFORMANCE



RED QUEEN STUDENT ACCOMMODATION

PROJECT OVERVIEW

Red Queen student accommodation in Coventry is a development of high quality, purpose-built accommodation serving students at the University of Warwick, consisting of 210 bedrooms. Torsion Engineering Services Ltd specified Geberit Mepla's multi-layered piping system for the building's supply of hot and cold water.

CHOOSING GEBERIT MEPLA

Torsion Engineering Services Ltd was looking for a product that was reliable with proven durability. Also important was that it worked with a manufacturer that was able to provide strong support both throughout the project and after completion.

Mechanical Contracts Manager Leon Grant at Torsion Engineering Services explains why the engineering team opted for Geberit Mepla. "The support we received from Geberit has been very good from pre-construction right through to installation on site. We had a dedicated contact throughout who helped monitor the project, offering advice and guidance. This was particularly important given we had complexities around expansion of the pipework and was a huge factor in ensuring that the installation process went as quickly and smoothly as it did. "We've had issues with copper theft in the past so were keen to find a solution that was not copper but still offered the same durability. Geberit Mepla combined this with flexibility and ease of transportation too so it really was the most obvious solution and the perfect system for a project like this."



ALDRIDGE SCHOOL

PROJECT OVERVIEW

Lord Combustion Services carried out works to refurbish a plant room at a Midlands secondary school during the first nationwide lockdown in spring 2020. The project would see the refurbishment of the school's plant room and replacement of the leaking underground low pressure hot water (LPHW) heating system.

CHOOSING GEBERIT MAPRESS STAINLESS STEEL

Stuart Smith, managing director at Lord Combustion Services, was looking for an innovative and reliable manufacturer to specify the pipework, which would supply the heating to the main block of the school. With work carried out during the height of the pandemic, efficiency and reliability were integral to the success of the project and in enabling the project to be completed during the school's closure during the nationwide lockdown. Stuart and the team specified Geberit Mapress stainless steel for the pipework. The pipe-pressing system offers speed, safety and cost-efficiency with easy installation, providing a specialist solution for all applications. Press fitting systems such as Geberit Mapress can deliver a host of installation benefits, with no hot works and no cooling down period.

Stuart explains why he specified Geberit Mapress: "The quality and lightweight nature of Geberit Mapress, and the quick and easy installation made possible with the crimp jointing system, enabled the project team's site time to be reduced. This fast installation process enabled us to complete the project within the short window available to us during the school's closure in April."



COLEG CAMBRIA YALE

PROJECT OVERVIEW

Coleg Cambria Yale is a sixth form college situated in Wrexham, North Wales. The college awarded a £21m contract to Wynne Construction to design and build a new three-storey, 96,000 sqft building, including facilities for catering, creative arts and sports.

CHOOSING GEBERIT MEPLA

Mechanical services contractor Margden Heating worked on the installation of the LTHW heating systems along with hot and cold water supply throughout the new building. They specified Geberit Mepla's multi-layered system for the building's water services. Available in dimensions of up to d75, Geberit Mepla is suitable for a range of industrial and commercial projects and brings together the very best of both copper and plastic piping systems.

John Roberts at Margden Heating explains why the team specified Geberit Mepla. "We've used Geberit Mepla for many years and the support has always been excellent every step of the way. We know the product very well and knew it was the perfect solution for this project. "The main factors for us that needed addressing was choosing a durable system that would stand the test of time. The building would be high footfall and in constant use, so we needed a reliable solution. "What was also important for us was that the installation was kept as quick and simple as possible. The press-fit system meant that there was no hot works, so no additional mess." The team also had a dedicated Geberit contact throughout the process. "Having a point of contact with the manufacturer meant that we had technical advice and expertise on hand throughout the process," John continued. "This helped ensure that the installation process went as smoothly as it did."



MIDLANDS WATER TREATMENT WORKS

PROJECT OVERVIEW

A water treatment works in the Midlands required pipework repair for the compressed air ozone system injected into the plant's drinking water supplies.

WHY GEBERIT?

The compressed air pipework was constructed using Geberit Mapress stainless steel 88.9mm, using a variety of bends, tees, flanges and couplings. The equipment also needed to be cooled via chilled water; this system was also constructed out of Geberit Mapress stainless steel, this time at 54mm.

Gary Smith, from GRS Mechanical explained the challenges of working in a fully operational water treatment works: "The existing plant is dairy welded stainless steel pipework and we had to work with this system, fitting new pipework to the old. We were only able to use existing valves, placing limitations on the install. The biggest challenge, however, was that the site is operational 24/7, with no shut down periods, so all of the installation had to fit around a fully functioning water treatment plant. The fact Geberit Mapress has no need for hot works was ideal, allowing the plant to be kept running throughout the repairs. Avoiding downtime was a real bonus for the customer – we showed them the works we had completed using Geberit Mapress at other plants to convince them of its benefits. Apart from the ease of installation that Geberit Mapress offered, time was also saved on the job as there was no need for off-site fabrication. Once the plant and tooling was set up, all works could be carried out on site to suit any existing layouts. Another key factor was hygiene. In this instance, Geberit Mapress is carrying super clean compressed air for the ozone plant associated with drinking water."

Further case studies can be found at [geberit.co.uk/referenceprojects](https://www.geberit.co.uk/referenceprojects)

**Geberit Sales Ltd
Geberit House
Edgehill Drive
Warwick
CV34 6NH**

**T 01926 516800
F 01926 400101
E enquiries@geberit.co.uk**

Literature 0800 007 5133

www.geberit.co.uk