

NEW

■ GEBERIT

GEBERIT FLOWFIT

FLUID INSTALLATION



**KNOW
HOW**
INSTALLED

NO MORE EFFORT

Geberit FlowFit is the innovative supply system that facilitates the perfect installation process. Effortless and intuitive to use, Geberit FlowFit provides a whole new experience in sanitary installation. Everything that makes work on the building site difficult and cumbersome has been deliberately avoided. Instead, flowing drains, excellent ideas and a whole host of innovative product details make Geberit FlowFit the sanitary solution of the future.

The comprehensive concept of Geberit FlowFit and the consistent focus on product benefits for sanitary professionals, sanitary engineers, and building owners ensure that everything flows optimally – just as it should.



WORK FLOW
Convenient installation



WATER FLOW
Flow-optimised hydraulics



MATERIAL FLOW
Sustainability concept



DATA FLOW
Intelligent planning

NO MORE CALIBRATION WHEN CUTTING TO LENGTH

Deburring and calibration of the pipes is not necessary. If the pipe is not round, however, a separate Geberit tool is available for calibration.

NO MORE UNCERTAINTY WHEN INSERTING

The windows in the fitting allow the correct insertion depth to be checked at a glance.

NO MORE CONTORSION WHEN PRESSING

The fitting is laterally pressed and rotatable. This allows for convenient and reliable pressing in even the tightest of spaces.

NO MORE GAPS IN THE PRODUCT RANGE

All standard pipe diameters are available to choose from. The installation of all diameters is carried out with just two different pressing jaws and without the need for constant tool changes.



THE NEW INSTALLATION FLOW

NO MORE CONTORTION

Installers have never had it so easy. The rotatable fitting allows the individual to determine the position of the pressing point, and the tool case is more lightweight than ever now that all dimensions from d16 to d75 can be pressed using just two pressing jaws.

STRAIGHTFORWARD POSITIONING

Since the user only has to place the pressing jaw on the fitting from one side going forward, installation is so much more convenient. The fitting is simply turned so that the pressing indicator is positioned in a readily accessible place. These positions are available in 45° increments.

NO MORE BOTTLNECKS

It is no longer essential to fully enclose the pipe during the pressing process – the tool only has to be applied to the laterally positioned pressing indicator. This makes it easy to work safely even in corners or narrow places.

FEWER TOOLS

Going forward, plumbers can take care of all pipe diameters ranging from d16 to d75 with just two pressing jaws. It is possible to press large dimensions without the need for heavy pressing collars, which facilitates the installation process significantly – particularly when working overhead.

SPEEDY WORKING BY HAND

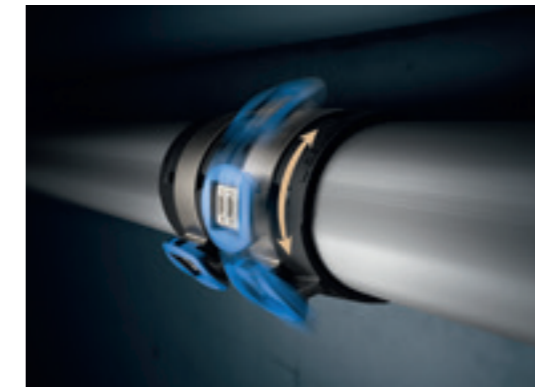
Alternatively, hand-operated pressing pliers can be used for smaller diameters of d16-40. Plus, thanks to the optimal force transmission, the effort required to process d40 for Geberit FlowFit is the same as the force of d26 for Geberit Mepla.



Pipe diameters and matching pressing jaws can be easily identified by the colour of the pressing indicators. The FlowFit pressing jaws are compatible with all Geberit tools in compatibility classes [1] and [2].



Hand-operated pressing pliers cover five dimensions and require neither electric current nor rechargeable batteries.



Can be pressed in any position thanks to the rotatable fitting.

Safe installation is guaranteed even in very narrow or difficult to reach places. The comfortable working posture afforded by the rotatable fitting and the absence of pressing collars makes working overhead easier even with large dimensions.

THE NEW INSTALLATION FLOW

NO MORE UNCERTAINTIES

With Geberit FlowFit, it's clear to see that the installation process is safe. This is ensured by special design features within the fitting that provide the user with clear feedback. The visual indicator offers clarity when the pipes are connected together, and the pressing indicator shows that the connection is secure.

RELIABLE INSERTION DEPTH ACCURACY

The fitting has its own inspection window that provides information about the insertion depth. What's more, the clear visual distinction between the silver pipes and the black fittings prevents any potential ambiguity.

PRESSING INDICATOR FOR SAFETY

The pressing indicator has several purposes. It marks where the pressing jaws are to be applied and its colour (blue or orange) indicates which pressing jaw is to be used with the same colour

code. Its distinctive geometry allows a clear tool guide rim to be established when the pressing jaw is applied.

SIMPLE DETECTION OF UNPRESSED FITTINGS

Following a successful pressing procedure, the pressing indicator detaches so that it is clear to see whether all pipes are securely connected when carrying out a subsequent connection check. Defined leak paths make unpressed fittings immediately visible in the pressure test.



CLEAR TOOL GUIDE RIM

The tool and pressing indicator fit together like a lock and key. This virtually eliminates the risk of a failed pressing sequence caused by incorrect positioning.



STRIKING PRESSING INDICATOR

Even in difficult visibility conditions, it is clear to see whether the pressing indicator is still on the fitting or if the connection is already pressed.



PRESSING INDICATORS

Is the pressing indicator still on the fitting? It is clear to see whether the pipe is reliably pressed.

INSPECTION WINDOWS

It is clear to see at a glance whether the pipe has been fully inserted.

DRINKING WATER HYGIENE

NO MORE HYGIENE WORRIES

Drinking water pipes have a vital task to fulfil in buildings and must meet complex requirements in terms of both safety and hygiene. Geberit FlowFit is UK Reg4 approved for drinking water.

CLEAN RIGHT FROM THE START

All Geberit FlowFit fittings, including the threaded connections and pipes, are fully protected against dirt and transport damage by protective caps.

CLEAN TRANSITION

FlowFit can be connected to all Geberit tap connectors with the universal Geberit MasterFix adapter. The advantage of using Geberit MasterFix T-pieces is that they significantly reduce the transfer of heat on the tap connector and enable looped installation without the need for any additional fittings.



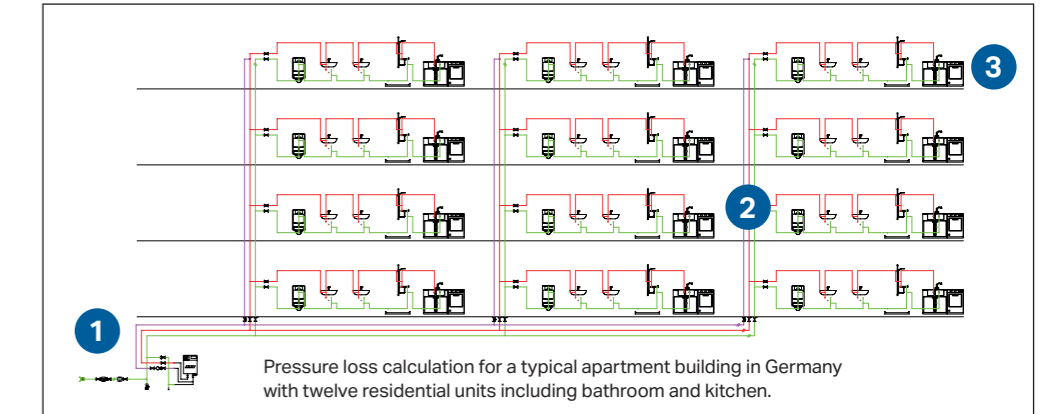
SMALL DIMENSIONS, HUGE HYGIENE ADVANTAGES

The flow-optimized design of FlowFit leads to minimal pressure loss. The water flows with less pressure loss through the pipe system up to the point of use. Planning and installation of the pipe system with smaller diameters is possible. A further advantage: This leads to shorter output times, a lower water volume and therefore less stagnation in the pipe.

NO MORE UNNECESSARY PRESSURE LOSSES

The minimal pressure losses found in Geberit FlowFit make it possible to implement systems with smaller pipe dimensions. This saves on both material costs and installation effort. In this example, the reduction to the maximum diameter of d40 even allows the entire project to be pressed with just one pressing jaw.

SYSTEM COMPARISON OF PRESSURE LOSSES



Pipe type	Typical plastic press system without pressure loss optimisation	Geberit FlowFit
1 Service connection / Basement distribution	d50	d40
	d50	d40
	d40	d32
	d40	d32
2 Riser pipe	d32	d25
	d32	d20
	d32	d20
3 Floor	d26	d20
	d20	d20
	d20	d20
	d20	d16
	d16	d16

Calculation of the diameters in the example shown above with 1bar minimum flow pressure at the last point of use.

SUSTAINABILITY

NO MORE DISPOSAL HASSLE

Sustainable product and manufacturing solutions in the sanitary sector are a matter of course for Geberit and make an important contribution to the overall Green Building concept. This also includes the avoidance of waste materials and packaging waste on the building site. This is exactly why a future-proof recycling system is available for Geberit FlowFit, which collects the reusable materials and feeds them back into the production process.

ENVIRONMENTAL PRODUCT DECLARATION (EPD)

Geberit FlowFit comes complete with an EPD (Environmental Product Declaration) in accordance with EN 15804. This serves as the basis for further declarations.

ALWAYS LEAD-FREE

All Geberit FlowFit threaded parts are made of lead-free gunmetal and silicon bronze and therefore meet the drinking water requirements both now and into the future. The product does not come into contact with lead during the manufacturing process either.

MATERIAL FLOW

Free returns of the pressing indicators and protective caps. These are reprocessed and used in other productions.



When pressing with the collection bag, the pressing indicators are collected directly and can be disposed of in bulk in the collection container.



Additional information can be found at www.geberit.co.uk/environment

PRODUCT RANGE

NO MORE GAPS

Geberit FlowFit has everything that a universally usable supply system needs. A whole host of special shapes as well as pre-insulated coils ensure fast and flexible application possibilities for every installation.

COMPREHENSIVE ASSORTMENT

Geberit FlowFit pipes are available as rods and coils with or without insulation. The system is rounded out with a comprehensive assortment of suitable fittings for all purposes. The fittings are all made of unbreakable, corrosion-resistant plastic, which is suitable for use on building sites.

STRAIGHTFORWARD COMBINATIONS

Geberit FlowFit is fully compatible with other Geberit supply systems. An adaptor can be used to establish a connection to all other Geberit piping systems.

EXCELLENT CONNECTIONS

Geberit FlowFit can be connected tool-free to any Geberit fittings with the MasterFix adaptor. The connection can also be removed again after a long period of operation.

FEWER STEPS IN THE PROCESS

The use of pre-insulated pipes saves both time and money.



A universal adaptor is available with Masterfix for tool-free connection to Geberit fittings. This eliminates the need for any additional sealing material such as hemp.



The product range includes a whole host of both standard and special fittings.

QUALITY CONTROL

NO MORE LOOPHOLES

Geberit FlowFit is subject to comprehensive quality control measures throughout the production process. This is in line with Geberit's philosophy on quality, which is uncompromising in its pursuit of reliable solutions. Every system component that leaves the production line is put through its paces several times.

SEAMLESS PROCESS CONTROL

Individual control mechanisms equipped with the latest technology check that the O-ring is correctly and completely assembled and properly seated. Measures are also taken to detect visible and non-visible defects or damage to the product material.

CHECKED RIGHT FROM THE START

Every individually supplied metal blank is checked for damage before it is sent for further processing. A Visio system is used to check that specific aspects such as the groove for the O-ring are free from contamination and chips. The blanks are not signed off until these tests have been successfully completed.

SMART PRODUCTION

Plastics production is carried out exclusively using state-of-the-art systems that use innovative sensors to check and learn process data and – if necessary – stop the installation process to optimise itself.

CLEAR IDENTIFICATION

Geberit achieves maximum safety in its production processes by ensuring transparency. Every Geberit FlowFit press connection can be unmistakably identified by its Data Matrix code, allowing it to be tracked on its way through the production process. This also allows potential sources of error to be detected and eliminated at the source.



THE NEW INSTALLATION FLOW

NO MORE CONSTANT TOOL CHANGES

Geberit FlowFit is available in eight dimensions, which can be processed using just two different pressing jaws. This cuts out the interruptions caused by having to constantly change tools. The correct pressing jaw for the respective pipe diameter can be easily determined by its colour.



TWO COLOURS - TWO TOOLS

The small pipe diameters from d16 to d40 can be processed using the blue pressing jaw, leaving the larger ones from d50 to d75 for the orange pressing jaw. The colours on the pressing indicators indicate which tool should be used to prevent any mix-ups.

FULLY COMPATIBLE

Geberit FlowFit pressing jaws are compatible with all Geberit tools in compatibility classes [1] and [2].

COST EFFECTIVE

Fewer tools, lower procurement costs. The reduced use of tools means significant savings on tool costs.

PRESSING INDICATOR FOR SAFETY

The pressing indicator automatically guides the tool to the correct position. This prevents the possibility of incorrect positioning and failed pressing sequences. As the pressing indicator detaches after pressing, unpressed areas are instantly visible and immediately detected. This serves to increase the safety of the installation.

Geberit Sales Ltd

Edgehill Drive
Warwick
CV34 6NH

T 01926 516800
F 01926 400101
E enquiries@geberit.co.uk

www.geberit.co.uk